

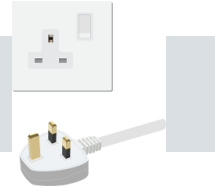
# ORIGINAL INSTRUCTION

## GENERAL INSTRUCTION FOR 230V MACHINES

The following will enable you to observe good working practices, keep yourself and fellow workers safe and maintain your tools and equipment in good working order.



### **WARNING!! KEEP TOOLS AND EQUIPMENT OUT OF REACH OF YOUNG CHILDREN**



- Grounded products must be plugged into an outlet properly installed and grounded in accordance with all codes and ordinances. Never remove the grounding prong or modify the plug in any way. Do not use any adapter plugs. Check with a qualified electrician if you are in doubt as to whether the outlet is properly grounded. If the product should electrically malfunction or break down, grounding provides a low resistance path to carry electricity away from the user.
- Double insulated products are equipped with a polarized plug (one blade is wider than the other). This plug will fit in a polarized outlet only one way. If the plug does not fit fully in the outlet, reverse the plug. If it still does not fit, contact a qualified electrician to install a polarized outlet. Do not change the plug in any way. Double insulation eliminates the need for the three wire grounded power cord and grounded power supply system.
- Avoid body contact with grounded surfaces such as pipes, radiators, ranges, and refrigerators. There is an increased risk of electric shock if your body is grounded.
- Do not expose this product to rain or wet conditions. Water entering an electric product will increase the risk of electric shock.
- Do not abuse the Power Cord. Never use the Power Cord to carry the product or pull the plug from an outlet. Keep the Power Cord away from heat, oil, sharp edges, or moving parts. Replace damaged Power Cords immediately. Damaged Power Cords increase the risk of electric shock.

## SPECIFIC SAFETY FOR DUST EXTRACTORS

**Do not** use this machine as a vacuum cleaner, try to keep the waste mainly to wood products.

**Do not** uplift workshop floor debris (stones, nails, screws, paper etc). Be aware that wood dust is an explosive medium.

**Do not** allow any 'naked light' source to occur anywhere near the machine. This includes cigarettes, matches, etc, and do not place the machine near any unprotected light bulbs, that could possibly get broken.

The suction force is generated by a high speed fan unit. This has the potential to amputate fingers, grab loose clothing (ties etc.) and 'bat' large chips etc, at high speeds. Keep all guarding in place, and if access to the fan becomes necessary

(due to blockage etc.) Disconnect the machine from the mains supply and ensure the fan has come to a complete stop before putting your hands anywhere near to it.

If you are not using 'clear' extraction hose, periodically remove the hose to check that the inlet to the machine is not getting restricted. (The safety guard grill of the inlet duct can be particularly irksome in this way, as long strand shavings etc., can wrap around the grill fret.)

Keep the particle filter clean. The machine relies on its ability to 'blow' air through the filter, to generate good suction. If the particle filter starts to clog, this reduces the air flow and hence the machine becomes less efficient.

The particle filter can be cleaned, by using an 'M' class vacuum cleaner, clean the inside of the filter.



**ONLY USE DUST EXTRACTION BAGS  
WITH THIS MACHINE NOT DOMESTIC  
WASTE BAGS!**



**DO NOT PLACE DUST EXTRACTION BAGS  
OVER THE FILTER ASSEMBLY!**

# SPECIFICATION

Voltage .....	230V/50Hz
Motor .....	750W (1HP)
Capacity .....	57ltr
Air flow .....	14.15m <sup>3</sup> /min (500cfm)
Filtration .....	5 micron
Intake diameter .....	100mm
Bag dimensions .....	370(D) x 640(H) mm
Vibration level .....	<2.5m/s <sup>2</sup>
Weight .....	27kg

## HANDLING & STORAGE

### – Care must be taken when handling this product.

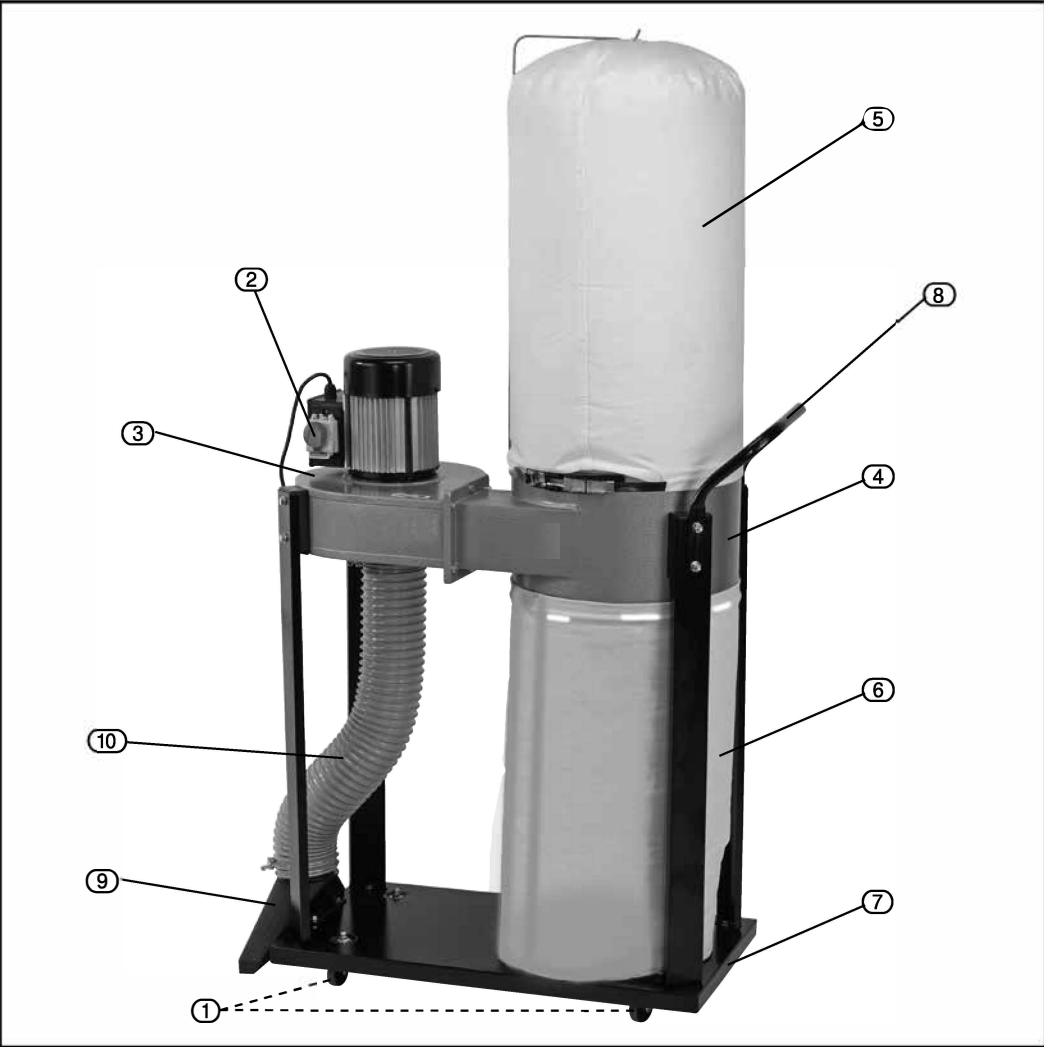
- Dropping this power tool could have an effect on its efficiency and could also result in personal injury. This product is not a toy and must be respected.

### – Environmental conditions can have a detrimental effect on this product if neglected.

- Exposure to damp air can gradually corrode components.
- If the product is unprotected from dust and debris, components will become clogged.
- If not cleaned and maintained correctly or regularly, the machine will not perform at its best.



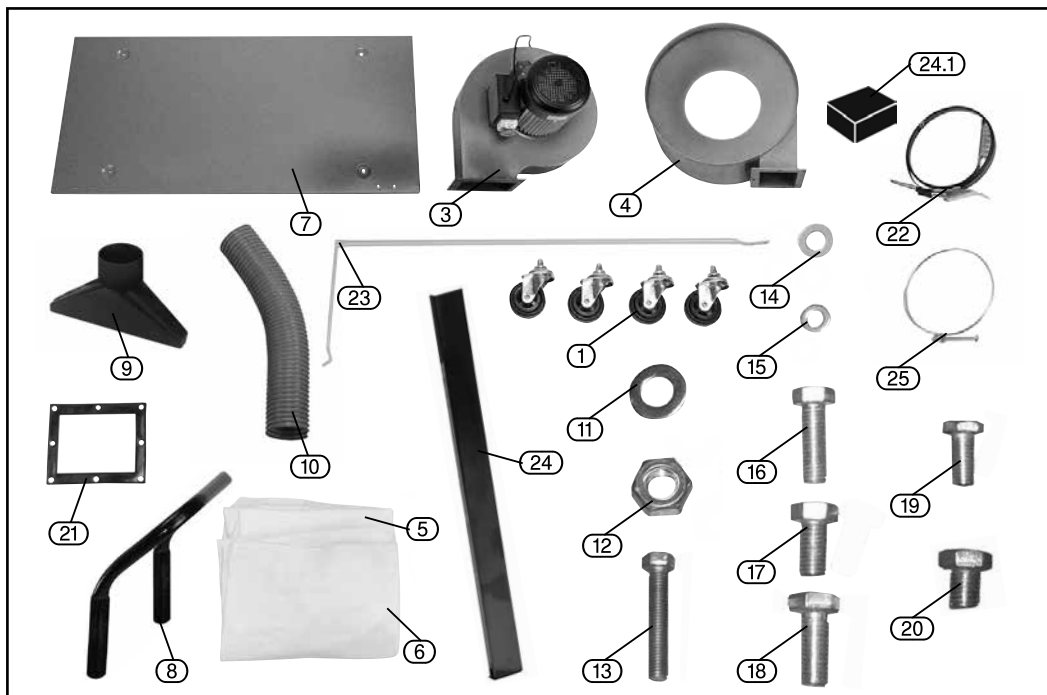
# TECHNICAL



- |                          |                    |
|--------------------------|--------------------|
| ① Castors (x4)           | ⑥ Collection bag   |
| ② No volt on/off switch  | ⑦ Base             |
| ③ Motor/ducting unit     | ⑧ Handle           |
| ④ Collection bag ducting | ⑨ Floor attachment |
| ⑤ Filter bag             | ⑩ Hose             |

# UNPACKING & CHECKING

## WHAT'S IN THE BOX



- ① Castors with 8mm screws and 8mm M4 nuts (x4)
- ③ Motor/ducting unit
- ④ Collection bag ducting
- ⑤ Filter bag
- ⑥ Collection bag
- ⑦ Base
- ⑧ Handle
- ⑨ Floor attachment

- ⑩ Hose.
- ⑪ 15 x 8mm Ø flat washers
- ⑫ 4 x M8 nuts
- ⑬ 4 x M8 x 45mm bolts
- ⑭ 6 x 6mm Ø flat washers
- ⑮ 2 x 4mm Ø flat washers
- ⑯ 4 x M8 x 25mm bolts
- ⑰ 2 x M8 x 15mm bolts

- ⑱ 6 x M6 x 15mm bolts
- ⑲ 2 x M4 x 10mm bolts
- ⑳ 4 x M8 x 10mm bolts
- ㉑ Gasket
- ㉒ Straps (x2)
- ㉓ Bag hook
- ㉔ Upright support
- ㉔.1 Spacing block
- ㉕ Hose clamps (x2)

# ASSEMBLY INSTRUCTIONS FOR DUST EXTRACTOR

**IMPORTANT:** Do not plug the machine in while assembling.

## 1) ATTACHING THE CASTORS

Align the castors (1) in the four positions on the underside of the base frame (7). Use 4 x small screws (8mm), 8mm flat washers, and M4 nuts to attach each castor wheel securely.

## 2) FRAME ASSEMBLY

Align the motor frame (3) to the collection frame (4), slot the gasket (21) in between, and secure them together using the M6 13mm bolts (20) with one flat washer per bolt.

## 3) INSTALLING THE UPRIGHT SUPPORTS

Align the support (24) in front of the spacing block (24.1) and attach it to the motor frame using M8 25mm bolts (16) and flat washers. Repeat this process for the other side.

Align the support (24) in front of the spacing block (24.1) again. This time, add the handle (8) in front of the support frame (24) and attach them all to the collection frame (4). Repeat this step for the other side.

## 4) ATTACHING THE FRAME TO THE BASE

Position the supports (24) and the entire frame assembly (3/4) above the base frame (7), aligning them over the pre-drilled holes. Secure them together using small M4 10mm bolts and flat washers.



## 5) INSTALLING THE BAG HOOK

Secure the upper bag hook (23) to the collection frame (4) using two small M4 bolts and washers (19) at the marked pre-drilled hole locations.

## 6) FITTING THE COLLECTION BAGS

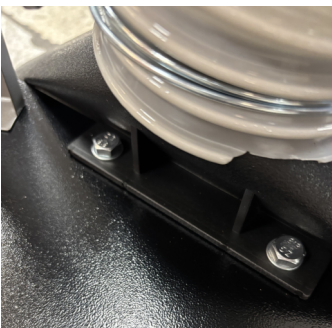
Position the upper (5) and lower (6) collection bags over the edge of the collection frame (4). Overlap the edges and clamp them down securely using the metal strap (22). Close the clamps to secure the bags in place. Finally, hook the upper bag (5) onto the bag hook (23).

## 7) CONNECTING THE HOSE & ATTACHMENTS

Align the flexi hose (10) on the underside of the collection frame (3) and secure it with the hose clamp (25). Connect the other end to the floor nozzle (9). To secure the floor nozzle (9), use the M8 10mm bolts (20) to attach it to the base frame (7).

## 8) POWERING ON/OFF

Once assembly is complete, switch the machine on by pressing the green button. To turn it off, press the red button.



# SYMBOLS



Read the instruction manual.



Wear face mask and safety glasses.



Wear ear defenders.



Wear protective gloves.



Do not abandon into the environment.



Keep out of the reach of children.



**Warning!**



**WEEE – Waste Electrical & Electronic Equipment.**

Do not dispose of Waste Electrical & Electronic Equipment in with domestic rubbish.



**Continuous A-Weighted Sound Pressure Level.**

# DISPOSAL

- At the end of the machine's working life, or when it can no longer be repaired, ensure that it is disposed of according to national regulations.
- Contact your local authority for details of collection schemes in your area.

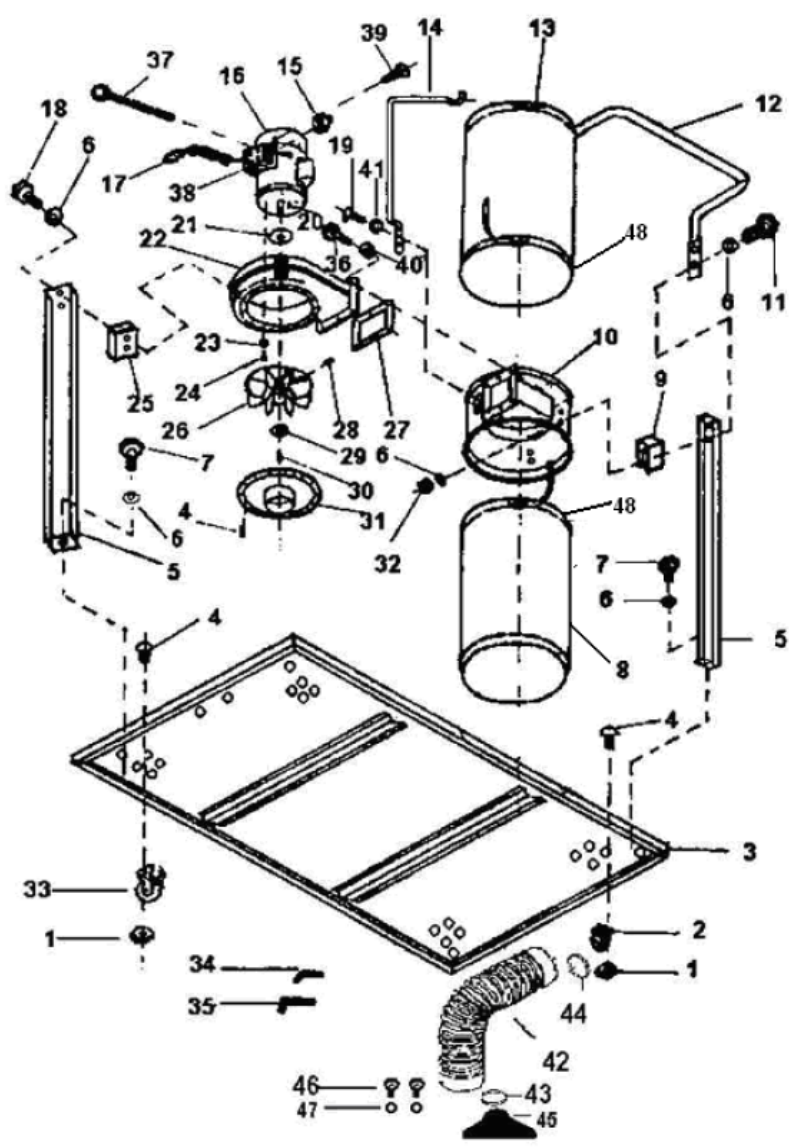
In all circumstances:

- Do not dispose of power tools with domestic waste.
- Do not incinerate.
- Do not dispose of WEEE\* as unsorted municipal waste.



\* *Waste Electrical & Electronic Equipment.*

DIAGRAM



## PARTS LIST

NO	DESCRIPTION	Q'TY	NO	DESCRIPTION	Q'TY
1	Nut	16	25	Block	2
2	Universal Caster	2	26	Turbo Fan	1
3	Base	1	27	Packing	1
4	Screw Pan HD	28	28	Screw Hex HD	1
5	Support Rod	4	29	Washer	1
6	Washer	16	30	Screw Hex Socket	1
7	Screw Hex HD	4	31	Inlet	1
8	Collector Bag	1	32	Nut	4
9	Collector Block	2	33	Directional Castor	2
10	Filtration Housing	1	34	Wrench Hex	1
11	Screw Hex HD	4	35	Wrench Hex	1
12	Handle	1	36	Screw Hex	6
13	Filter Bag	1	37	Screw Pan HD	4
14	Vertical Stand	1	38	Switch Cover	1
15	Switch	1	39	Cross Slot Screw	2
16	Motor	1	40	Washer	6
17	Power Cord	1	41	Washer	2
18	Screw Hex HD	4	42	Hose	1
19	Screw Pan HD	2	43	Hose Clamp	1
20	Key	1	44	Hose Clamp	1
21	Packing	1	45	Floor Sweeper	1
22	Fan Housing	1	46	Bolt	2
23	Spring Washer	4	47	Washer	2
24	Screw Hex HD	4	48	Bag Clamp	2



The Importer:

**TOOLSAVE LTD**

Unit C, Manders Ind. Est.,  
Old Heath Road, Wolverhampton,  
WV1 2RP.

Declare that the product:

**Designation: Professional Dust Collector**

**Model: PDC750**

Complies with the following Directives:

EN 60335-1:2012+A11

Standards & technical specifications referred to:

**EC Council Directive 2006/42/EC Machinery**

Report No.                    2006/42/EC  
                                      06/42/EC - Annex  
                                      I/05.2006 EN  
                                      62233:2008 E  
                                      N 60335-2-69:2012

**Authorised Technical File Holder: Bill Evans**

**01/01/2025**

**The Director**

